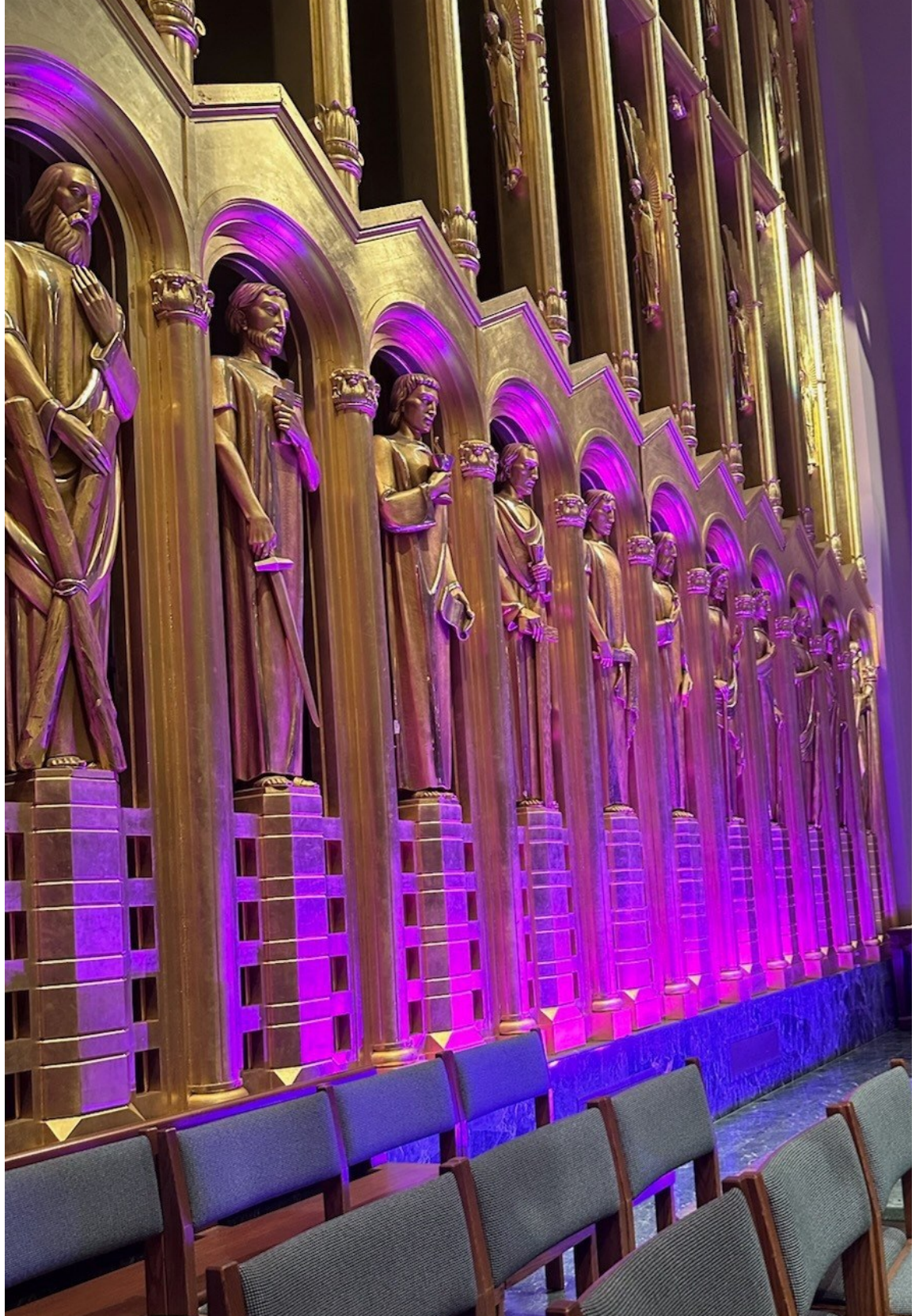


SS. FAITH, HOPE & CHARITY  
CATHOLIC PARISH

Annual Financial Report

July 1, 2023 - June 30, 2024





Dear Parishioner,

Enclosed is a copy of our annual report for the fiscal year ending 6-30-24. I am sorry for the short delay in getting this document to you but know that the numbers are the same as those that I shared with you when I spoke at all the Masses before Thanksgiving. This report reflects a surplus in ordinary income/expenses of just over \$64,000. (The asterisk and corresponding note below the revenue/expense section clarifies this surplus.) I am grateful to all who helped us remain fiscally stable. Our electronic giving continues to increase and now there is a new option: the availability to make church donations via Zelle. Information on the various forms of electronic giving is included in the report. Our extraordinary expenses were a challenge this past year as we needed to replace the air conditioning system in our church. This project cost \$869,706 and was paid for by donations, bequests and withdrawals from our savings account.

We also continued our commitment to the poor by a variety of outreaches such as: Food Sharing, Giving Tree, support for projects sponsored by Catholic Extension, support for the Catholic Charities Adopt-a-Family effort, Mission Chicago and the Guild's Souper Heroes.

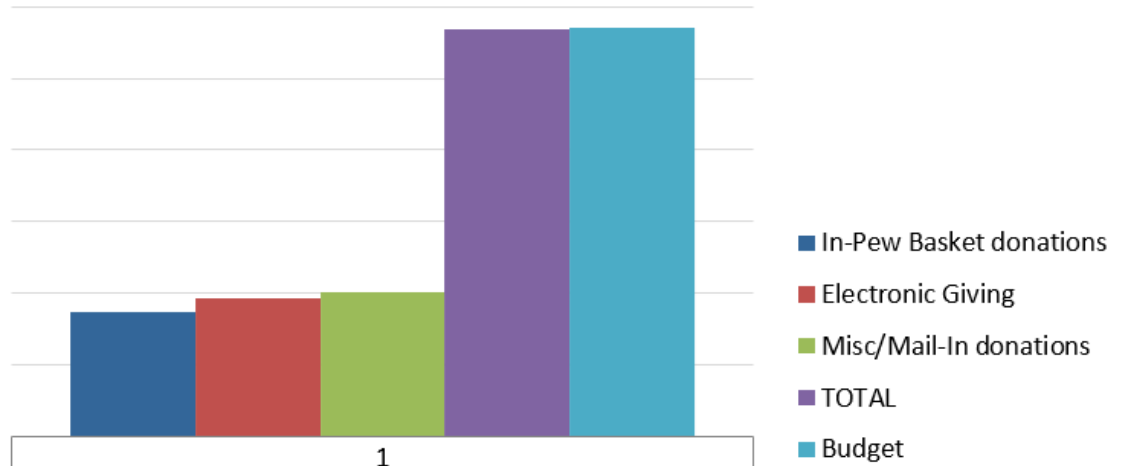
The numbers cannot be limited to dollars and cents. This report reflects a small increase in our weekend Mass attendance. Our number of Baptisms was over 100—the largest number in decades—and our number of people in the RCIA/OCIA program continues to grow. The number of children being educated in our parish school or our Religious Education Program was well over 600. There is a vitality in our community of which we can be proud.

I am privileged to be the pastor of this special parish. Please know that I am grateful for your support on so many levels.

Fr. Marty O'Donovan

**Ss. Faith, Hope & Charity Parish  
Sunday Offertory vs. Budget  
FY 2022/2023**

**FY2023/2024 SUNDAY OFFERTORY vs BUDGET**



	1
In-Pew Basket donations	347,301.32
Electronic Giving	386,407.51
Misc/Mail-In donations	402,659.10
<b>TOTAL</b>	<b>1,136,367.93</b>
<b>Budget</b>	<b>\$1,140,000.00</b>

***Consider Electronic Giving!***

Regular electronic giving enables you to consistently and easily support Ss. Faith, Hope and Charity Parish. Electronic giving also helps the parish predict cash-flow for budgeting purposes. Visit [www.givecentral.org](http://www.givecentral.org) to sign up or contact the business office by email at [dborman@faithhope.org](mailto:dborman@faithhope.org).

To donate electronically:



**Zelle**

**New for Faith Hope!**

Now accepting church donations via Zelle.

Donate by using our parish specific Zelle email: [donations@faithhope.org](mailto:donations@faithhope.org).

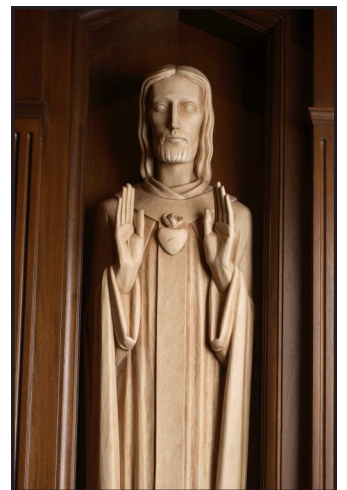
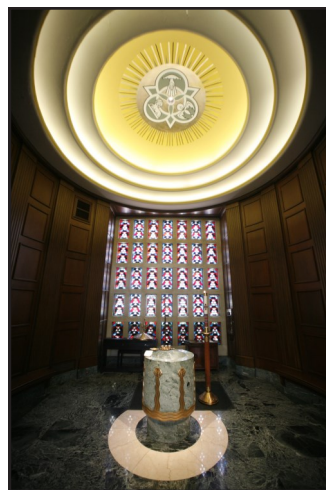
***A Tax-Savvy Way to Support Faith Hope!***

When you donate appreciated securities or mutual funds to our parish, you can reduce or even eliminate federal capital gains taxes on the transfer. You may also be entitled to a federal income tax charitable deduction based on the fair market value of the securities at the time of the transfer. For more information about donating stock or securities, please contact your financial advisor.

To make a stock donation to our parish please visit [archchicago.org/stockgiftform](http://archchicago.org/stockgiftform) and complete the electronic Letter of Intention (LOI) form. Once you have submitted the form, you will receive a confirmation email with detailed instructions for you to complete your gift. If you have any questions, please contact Karen Whitehead, Archdiocese of Chicago at 312.534.7461 or [kwhitehead@archchicago.org](mailto:kwhitehead@archchicago.org). All gifts directly benefit Ss Faith Hope & Charity. If you have any additional questions please reach out to our Business Office at [dborman@faithhope.org](mailto:dborman@faithhope.org).

## Ss. Faith, Hope & Charity Parish Statement of Financial Position June 30, 2024 and 2023

	2024	2023
<b>Assets</b>		
Cash in Banks and Money Market Funds	\$ 753,277	796,740
Regular Operating Savings / TTWCI	2,260,289	2,708,165
Stipend Account	18,513	18,513
Total Cash and Equivalents	3,032,079	3,523,418
Property	23,424	23,424
Tuition Received in Process	-	118,223
<b>Total Assets</b>	<b>\$ 3,055,503</b>	<b>3,665,065</b>
	2024	2023
<b>Liabilities and Net Assets</b>		
Payables	\$ 413,133	349,826
Prepaid School Tuition and Fees	-	31,735
<b>Total Liabilities</b>	<b>413,133</b>	<b>381,561</b>
<b>Net Assets</b>		
Unrestricted Funds	3,004,498	3,022,455
Property Fund	23,424	23,424
	<b>3,027,922</b>	<b>3,045,879</b>
Restricted Funds:		
Anchors With Heart Fund	240,728	185,637
Paddle Raise STEM	-	11,008
	<b>240,728</b>	<b>196,645</b>
Net Parish	<b>(626,280)</b>	<b>40,980</b>
<b>Total Liabilities and Net Assets</b>	<b>\$ 3,055,503</b>	<b>3,665,065</b>



**Ss. Faith, Hope & Charity Parish**  
**Statement of Activities**  
**Fiscal Year End June 30**

	<b>2024</b>			<b>2023</b>
	<b>CHURCH &amp; RE</b>	<b>SCHOOL</b>	<b>TOTAL</b>	<b>TOTAL</b>
<b>REVENUE:</b>				
Sundays and Holy Day Collections	\$ 1,136,368	-	1,136,368	1,189,312
Christmas Collection	422,926	-	422,926	370,538
Easter Collection	139,460	-	139,460	138,320
Thanksgiving Collection	280,136	-	280,136	281,588
Tuition & Fees*	117,741	2,585,134	2,702,875	2,597,129
Miscellaneous Income	59,501	2,172	61,673	41,840
Outside Funding Sources	-	44,073	44,073	47,564
Fundraising	-	200,000	200,000	310,000
<b>Total Revenue</b>	<b>\$ 2,156,132</b>	<b>2,831,379</b>	<b>4,987,511</b>	<b>4,976,291</b>
<b>EXPENSES:</b>				
Salaries & Benefits	\$ 1,037,222	2,575,500	3,612,722	3,429,091
Books and Supplies (Non Liturgical)	18,021	157,973	175,994	224,187
Furnishings, Supplies & Equipment	59,677	61,232	120,909	116,235
Food Service & Meals	32,930	1,472	34,402	32,249
Utilities	139,911	110,196	250,107	287,554
Maintenance & Building Repairs	137,672	141,160	278,832	298,902
Archdiocesan Assessment	196,380	-	196,380	194,328
PRMAA Assessment	68,736	-	68,736	68,016
OCS Assessment	-	16,356	16,356	14,000
Property / Casualty	98,421	74,245	172,666	159,777
Auto Insurance - Priest Owned Vehicles	3,284	-	3,284	2,986
Miscellaneous	33,202	21,613	54,815	85,696
<b>Total Expenses</b>	<b>\$ 1,825,456</b>	<b>3,159,747</b>	<b>4,985,203</b>	<b>4,913,021</b>
<b>Ordinary Operating Surplus (Deficit)*</b>	<b>330,676</b>	<b>(328,368)</b>	<b>2,308</b>	<b>63,270</b>
<b>EXTRAORDINARY INCOME:</b>				
Sharing Collections	\$ 82,465	-	82,465	90,185
Arch Required Collections	37,758	-	37,758	58,953
Estates, Bequests and Memorials	292,750	-	292,750	258,627
Air Conditioning - Church	105,725	-	105,725	-
<b>Total Extraordinary Income</b>	<b>518,698</b>	<b>-</b>	<b>518,698</b>	<b>407,765</b>
<b>EXTRAORDINARY EXPENSES:</b>				
Sharing / Outreach Donations	\$ 82,465	-	82,465	123,196
Payment Arch Required Collections	37,758	-	37,758	58,953
Capital Improvements	964,571	62,492	1,027,063	247,906
<b>Total Extraordinary Expenses</b>	<b>\$ 1,084,794</b>	<b>62,492</b>	<b>1,147,286</b>	<b>430,055</b>
<b>Net Extraordinary Activities</b>	<b>\$ (566,096)</b>	<b>(62,492)</b>	<b>(628,588)</b>	<b>(22,290)</b>
<b>Net Parish</b>	<b>\$ (235,420)</b>	<b>(390,860)</b>	<b>(626,280)</b>	<b>40,980</b>

\*Does not reflect \$62,000 of school tuition for FY24 collected in FY25.

**Ss. Faith, Hope & Charity Parish**  
**Growing in Faith - Building for Tomorrow**

**To Teach Who Christ Is Capital Campaign**

<b>Pledge Commitment Total (409 Donors)</b>	<b>\$9,711,100</b>
<b>Pledges Paid</b>	<b>8,426,504</b>
<b>Archdiocese Dollars Paid (40% due of benchmark goal)</b>	<b>803,352</b>
<b>Cancelled Pledges</b>	<b>\$200,156</b>
<b>No Payments on Pledges</b>	<b>\$62,250</b>
<b>Past Due Pledge Payments</b>	<b>\$480,698</b>
<b>Balance Due on Pledges</b>	<b>\$547,406</b>

---

**To Teach Who Christ Is Outreach Donations**

Catholic Extension Yakima & Kalamazoo Projects (FY21/22)	\$120,000
St. Jerome Parish (FY22/23)	\$20,000
Archdiocese of Bhopal, India (FY22/23)	\$23,000
Catholic Charities Parish-Family Sponsorship Program (FY24)	\$11,320

**Parish Outreach (FY23/24)**

Project Turkey	\$7,752
Giving Tree	\$12,469
Mission Chicago	\$11,030
Food Sharing	\$38,642

**Annual Catholic Appeal\*** **\$203,400**

*\*The above amount is reflective of the total collected as of this report - but donations to ACA continue through December for the 2024 campaign. Our final ACA total for 2023 was \$202,738 against a goal of \$283,790.*



## Ss. Faith, Hope & Charity Parish Anchors With Heart / Bulldog Fund

	2024	2023	2022
<b>Fund Balance - Beginning of Year</b>	\$ 196,645	330,644	461,419
Security Paddle Raise	113,650	-	-
STEM Lab Paddle Raise	-	-	62,250
Contributions include Blarney Bash	569,125	560,722	599,073
<b>Available Funds</b>	<b>\$ 879,420</b>	<b>891,366</b>	<b>1,122,742</b>
<b>Expenditures</b>			
Blarney Bash Funded Capital Projects	79,545	89,920	328,591
*Blarney Bash Funded Faculty Bonuses	315,075	311,309	191,595
Total School Expenditures / Projects	<b>\$ 394,620</b>	<b>401,229</b>	<b>520,186</b>
School Financial Support			
Operating Expenses	\$ 200,000	250,000	200,000
Tuition Financial Assistance	44,072	43,492	71,912
	<b>\$ 244,072</b>	<b>293,492</b>	<b>271,912</b>
<b>Total Expenditures</b>	<b>638,692</b>	<b>694,721</b>	<b>792,098</b>
<b>Fund Balance - End of Year</b>	<b>\$ 240,728</b>	<b>196,645</b>	<b>330,644</b>

### 2024 BLARNEY BASH PADDLE RAISE

At FHC, the safety of our students, faculty and staff remains our top priority. The funds raised from our March 2024 Blarney Bash paddle raise have enabled us to implement the 2<sup>nd</sup> phase of our school safety enhancement program.

The 2024 event raised just over \$110,000, allowing us to implement several key enhancements, including the following:

- Our school-wide intercom system was replaced by a state-of-the-art two way communications system, which is now installed in all classrooms and spaces utilized by students and faculty
- A keyless, secure FOB system was installed during the summer of 2024, which allows us to monitor and control access to our school buildings at all times.
- We retained the Beacon Training Group to conduct Active Threat Training for all of our faculty and staff, prior to the start of the 2024-25 school year

We are deeply grateful for all of the families who supported this year’s paddle raise, helping to make these important safety enhancements possible.



## Ss. Faith, Hope & Charity Parish Participation in Parish Life The Last Five Years

### Parish Growth and Support

	2024	2023	2022	2021	2020
Families	1,750	1,693	1,668	1,711	1,698
Members	5,332	5,241	5,168	5,291	5,418
Sunday Mass attendance*	1,076	1,013	1,003	1,096	1,230
% of members attending	20%	19%	19%	21%	23%

### Sacramental Life

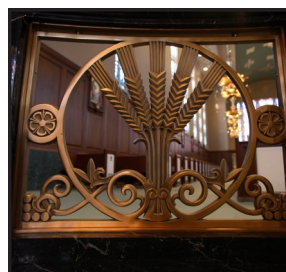
	2024	2023	2022	2021	2020
Baptisms	106	82	87	64	61
First Communions	88	80	78	88	83
Confirmations	79	85	69	81	101
Marriages					
Catholic	16	13	12	13	12
Interfaith	3	3	4	2	4
Funerals	40	38	53	35	32
RCIA candidate conversions	9	4	3	4	2

### Education Programs

	2024	2023	2022	2021	2020
<u>Religious Education</u>					
Students	395	343	367	338	407
Annual tuition per student	\$ 360	360	360	360	360
<u>Elementary School</u>					
Pre-school	61	72	53	39	51
Kindergarten	31	13	24	18	34
Grades 1 through 8	190	200	190	211	210
	282	285	267	268	295

#### Per Student:

• Tuition	\$ 10,113	9,270	8,686	8,274	7,883
• Cost	\$ 11,205	11,084	9,855	10,037	10,584
% Tuition of Cost	90%	84%	88%	82%	73%





**Ss. Faith, Hope & Charity Parish**  
**Buildings & Grounds: Improvements and Special Projects**  
**Fiscal Years Ended June 30**

	2024	2023	2022	2021
<b>Church / Bell Tower Drainage / Parish Center</b>				
Roof and Downspout repairs	-	-	-	2,603
Parish Center Equipment, Supplies, Lighting	14,313	3,995	-	-
HVAC Maintenance, Repairs	-	-	-	9,547
Parish Center Lobby Ceiling	-	-	6,288	-
Concrete, Doors and Sewer Repair	-	-	-	6,775
Church A/C Replacement	869,706	-	-	-
Fire Alarm, Sprinkler System	-	-	-	3,201
Sinkhole South Parking Lot	22,385	-	-	-
Landscaping, Masonry, Tree Care	5,875	-	-	209,685
Cry Room Roof Repair	-	-	20,820	-
Asbestos / Mold Abatement	600	31,000	-	6,444
Parish Center Lobby Furnace	-	-	3,590	-
Compressor and Air Headler Repairs	-	9,178	18,300	-
Pneumatic Control Repairs / Removal	4,922	-	4,053	-
	<b>\$ 917,801</b>	<b>44,173</b>	<b>53,051</b>	<b>238,255</b>
<b>TTWCI / Growing In Faith Capital Projects</b>	<b>\$ 11,320</b>	<b>-</b>	<b>-</b>	<b>19,005</b>
<b>School</b>				
Gym Steps Replaced	-	-	12,960	-
New School Administrative Position FY22	-	-	-	55,000
New Lockers	-	14,575	-	-
Abatement	7,890	-	-	-
Boiler Repairs / HVAC System	23,488	-	18,691	-
Main Floor hallways painted	-	-	-	58,000
Gym Windows Repaired, Caulked, and Painted	-	-	-	4,350
Drainage / Plumbing	-	-	3,602	-
Fire / Sprinkler Electrical System repairs	3,000	-	-	18,064
Electrical System / Server Upgrades	3,882	2,772	6,013	272,000
Sewers, Drains, Flood Relief	4,232	-	4,350	15,885
Tuck Pointing - Chimney Brickwork	20,000	145,000	-	-
Boys Washrooms Middle School & Auditorium	-	12,550	35,000	-
New Radios	-	17,506	-	-
	<b>\$ 62,492</b>	<b>192,403</b>	<b>80,616</b>	<b>423,299</b>
<b>Parish Activity Center (PAC)</b>				
Tree Removal	-	-	7,000	-
Boiler Maintenance	23,053	-	2,212	22,500
Art Room Expansion	-	3,800	18,000	-
Preschool Sink & Flooring	-	7,530	16,000	-
Sewers, Drains, Downspouts, Flood Relief	9,947	-	-	-
	<b>\$ 33,000</b>	<b>11,330</b>	<b>43,212</b>	<b>22,500</b>
<b>Rectory</b>				
Boiler, Tubes, Handholds & AquaStat	2,450	-	3,500	9,250
	<b>\$ 2,450</b>	<b>-</b>	<b>3,500</b>	<b>9,250</b>
<b>Total</b>	<b>\$ 1,027,063</b>	<b>247,906</b>	<b>180,379</b>	<b>712,309</b>

**Ss. Faith, Hope & Charity Parish  
Participation in Parish Life  
Contributions from Members  
Fiscal Year End June 30**

Annual Contribution	2024				2023			
	Donors				Donors			
	No.	%	Amount (\$000)	%	No.	%	Amount (\$000)	%
<i>Full Members (1)</i>								
Over \$10,000	43	2%	\$954	48%	24	1%	\$793	40%
\$5,000-\$9,999	32	2%	209	11%	31	2%	236	12%
\$2,500-\$4,999	79	5%	189	10%	90	5%	239	12%
\$1,000-\$2,499	198	11%	298	15%	229	14%	353	18%
\$500-\$999	248	14%	193	10%	192	11%	177	9%
\$250-\$499	294	17%	84	4%	266	16%	123	6%
Less than \$250	362	21%	31	2%	268	16%	42	2%
No Record of Giving	494	28%	0	0%	593	35%	0	0%
<b>Total</b>	<b>1,750</b>	<b>100%</b>	<b>1,958</b>	<b>99%</b>	<b>1,693</b>	<b>100%</b>	<b>1,963</b>	<b>99%</b>
Cash Basket Donation			21	1%			17	1%
<b>Total Contributors</b>	<b>1,750</b>	<b>100%</b>	<b>1,979</b>	<b>100%</b>	<b>1,693</b>	<b>100%</b>	<b>1,980</b>	<b>100%</b>

NOTE: Included above are contributions from 'Student Families'.

**Contributions from Student Families\***

	2024				2023			
	Donors (\$000)				Donors (\$000)			
	No.	%	Amount	Avg/WK	No.	%	Amount	Avg/WK
<b>SCHOOL</b>								
Donors	58	36%	47	16	59	36%	50	16
No Record of Giving	104	64%	0		105	64%	0	
	<b>162</b>	<b>100%</b>	<b>47</b>		<b>164</b>	<b>100%</b>	<b>50</b>	
<b>RELIGIOUS EDUCATION</b>								
Donors	143	57%	88	12	121	53%	81	13
No Record of Giving	106	43%	0		106	47%	0	
	<b>249</b>	<b>100%</b>	<b>88</b>		<b>227</b>	<b>100%</b>	<b>81</b>	
<b>Total Student Families</b>	<b>411</b>		<b>135</b>	<b>6</b>	<b>391</b>		<b>131</b>	<b>6</b>

\*These contributions are included in the main summary at the top of page.

# OUTREACH

## *Welcoming the Stranger: Catholic Charities Parish-Family Sponsorship Program*



Catholic Charities has connected 167 families with 31 participating parishes in the Parish-Family Sponsorship Program. “There are so many beautiful stories of helping families navigate immigration, employment, schools... not to mention all the weddings and baptisms,” says Marilu Gonzalez, Director of Catholic Charities Regional Program Operations on Chicago’s southwest side. Pictured: The Rodriguez and Larkin families together with Marilu (back, left), and Father Marty Donovan, Pastor at Saints Faith, Hope, and Charity Parish in Winnetka (back row, center).

Since August 2022, the City of Chicago has welcomed more than 47,000 new arrivals from the southern border, including the Rodriguez family. Andrea and Yarwin Rodriguez and their sons, Apolo and Alan, left their home in Los Teques, Venezuela, with two bags—one with food and the other with clothing and medicine for the children—and headed to the U.S. Asking for advice and directions along the way, they traversed 3,000 miles across Venezuela, Colombia, Panama, Costa Rica, Nicaragua, Honduras, Guatemala, and Mexico, primarily by bus and by foot. When they arrived in Chicago, the Rodriguez family slept on the floor at a police station in the city’s Lakeview neighborhood.

The Larkin family - Ian, Nora, and their seven children - are parishioners of Saints Faith, Hope, and Charity. While active in their parish and community, they had never worked with migrants or refugees. That didn’t stop them from inviting the Rodriguez family to live rent-free in their suburban Northfield property and helping them

navigate a brand-new life. “Offering our rental property to asylum seekers wasn’t planned,” Ian says. “It also wasn’t exceptional. I’d like to think that anyone in our position would do the same thing.” His wife, Nora, concurs. “We had an empty house. We could not in good conscience charge someone to live here when families with small children, right here and now, were surviving outside in tents. We aren’t activists. We simply had something to provide, and we did it.”

Reflecting on their desire to stay in the U.S., Ian adds, “Andrea and Yarwin understandably are worried about the situation in Venezuela: the recent election, protests, violence, and deaths. A lawyer friend has helped the family apply for asylum. With each passing month, they have become more comfortable, more self-reliant, more carefully optimistic.” The Rodriguez family is grateful for the support they have received from the Larkins and the community.



# OUTREACH

## A Parish Partnership with the Diocese of Yakima, Washington State

The Literacy Wagon is part of a broad effort by the Diocese of Yakima, to reach out to Catholic migrant workers where they live, and to bring the Church to them. It was made possible by a multi-year pledge through Catholic Extension's Parish Partnerships program. In 2017, Saints Faith, Hope and Charity Parish in Winnetka, Illinois, made a 5-year commitment to financially support the ministry. Fr. Marty O'Donovan, pastor of Saints Faith, Hope and Charity, visited the migrant ministry to experience first-hand the fruits of his parish's generosity. He was reminded that "the Church isn't just in buildings; it's wherever people gather."



## A Parish Partnership with St. Jerome Parish in Rogers Park

In 2022, St. Jerome Parish in Rogers Park, with the assistance of a \$20,000 gift from FHC, and the donation of skilled time and talents of their parishioners in various trades, renovated a run down former convent and turned it into an exceptional and functional space for the St. Jerome Parish Latino School of Culture, Language and Religion.

This program was designed by pastor Fr. Noel Reyes to enhance the cultural assimilation of the second generation Latino population of their parish by teaching students the historical and religious roots of their ethnicity.



## A Parish Partnership with the Archdiocese of Bhopal

In 2015, Ss. Faith, Hope & Charity parishioners raised more than \$8 million in the "To Teach Who Christ Is" capital campaign. The money was spent on school improvements, a new parish center and charitable giving. Last year, FHC gave some money to meet a great need at a parish school across the globe. That need came to us from a close FHC friend who served us well then had to say goodbye. After 5 years with FHC, Father Thomas Philip is back home in India with a gift from all of YOU.

The Archdiocese of Bhopal is in the center of India. The students pay less than a quarter per month to attend school there. With the upcoming rainy season ahead, Fr. Thomas noticed an immediate need. \$23,000 from Ss. Faith, Hope & Charity Church paid for a new tin roof to help these growing minds and bodies.



## A Parish Partnership with the Diocese of Kalamazoo, MI

Saints Faith, Hope and Charity partnered with Catholic Extension to support the inspiring work of Holy Family Healthcare. This project expanded the healthcare's site to triple its size and can now support 15,000 visits annually. They plan to renovate the vacant upper floors of the facility into dorm rooms, complete with a chapel, in the hope that medical students can do monthlong rotations to be immersed in rural healthcare and Catholic social teaching.

Holy Family Healthcare also offers nonmedical assistance, such as a food pantry, a free clothing closet and even scholarships for children to attend local Catholic schools.



# PARISH MINISTRIES



**PARISH PICNIC**  
 SUNDAY, OCTOBER 13  
 FOLLOWING OUR 2:30PM  
 OUTDOOR MASS ON THE LAWN  
 (NO 5PM MASS THIS DAY)

**FREE FAMILY FUN!**

FEATURING: CONNIE'S PIZZA, HOT DOGS, HAMBURGERS, MAC & CHEESE, COOKIES, HOMER'S ICE CREAM, POLICE AND FIREMEN, CORNHOLE, DUAL POP-A-SHOT GAME, A DJ, FACE-PAINTING, BALLOON TWISTER, PUMPKIN DECORATING STATION, SOFT PLAY OASIS FOR TODDLERS AND MORE!

Sign up to volunteer here: <https://shorturl.at/r2D0h>

**WE HOPE YOUR FAMILY WILL JOIN US!**



**CORPUS CRISTI**



**SOUPER HEROES**

# PARISH MINISTRIES



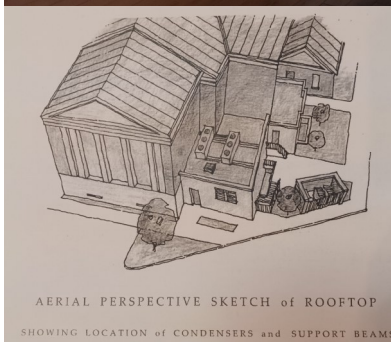
**WOMEN'S GUILD  
OSCAR NIGHT**



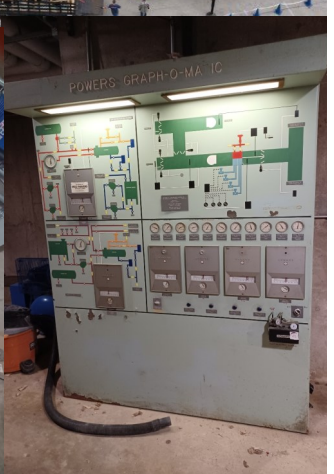
**FAITH, HOPE & CARPENTERS**



**FR. PETER / THRIVE FOUNDATION**



AERIAL PERSPECTIVE SKETCH OF ROOFTOP  
SHOWING LOCATION OF CONDENSERS AND SUPPORT BEAMS



**BUILDINGS & GROUNDS**

# PARISH MINISTRIES



PARISH SCHOOL



RELIGIOUS EDUCATION

# Ss. Faith, Hope & Charity



Ss. Faith, Hope & Charity Parish  
191 Linden Street  
Winnetka, Illinois 60093  
[www.faithhope.org](http://www.faithhope.org)